

SK-15 High Pressure Rotor

The SK-15 rotor is only available for the ETHOS UP and the ETHOS EASY. The SK-15 is a high-pressure rotor featuring up to 15 TFM vessels with a volume of 100 mL and suitable for all applications. It is fully compliant with commonly used standard methods, such as the US EPA 3015, 3051, and 3052. The SK-15 features an enhanced 'vent-and-reseal' technology for controlling the inner pressure of all vessels with complete safety.

| SAMPLE TYPE



Officials



Agriculture



Beverage



Cannabis



Ceramics



Chemicals



Clinicals



Consumer Products



Environmental



Food & Feed



Metals & Mining



Petrochemicals



Pharmaceuticals



Pigments



Polymers

| SAMPLE AMOUNT



Small



Medium



Large

| SAMPLE THROUGHPUT



6 positions



10 positions



12 positions



15 positions



16 positions

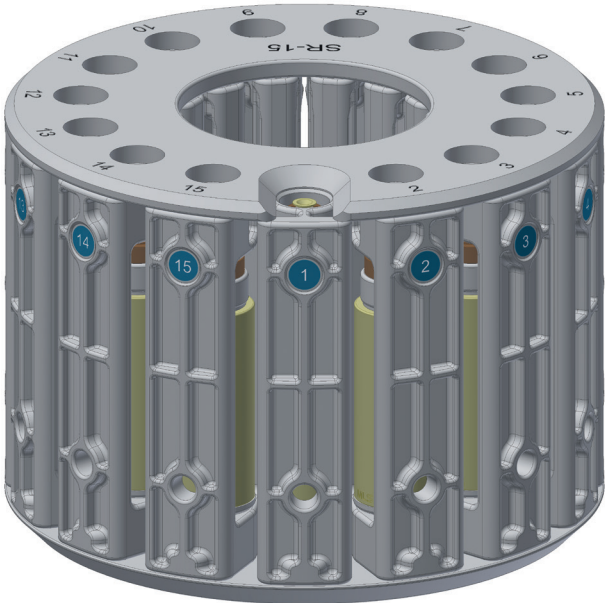


24 positions




44 positions

SK-15 High Pressure Rotor



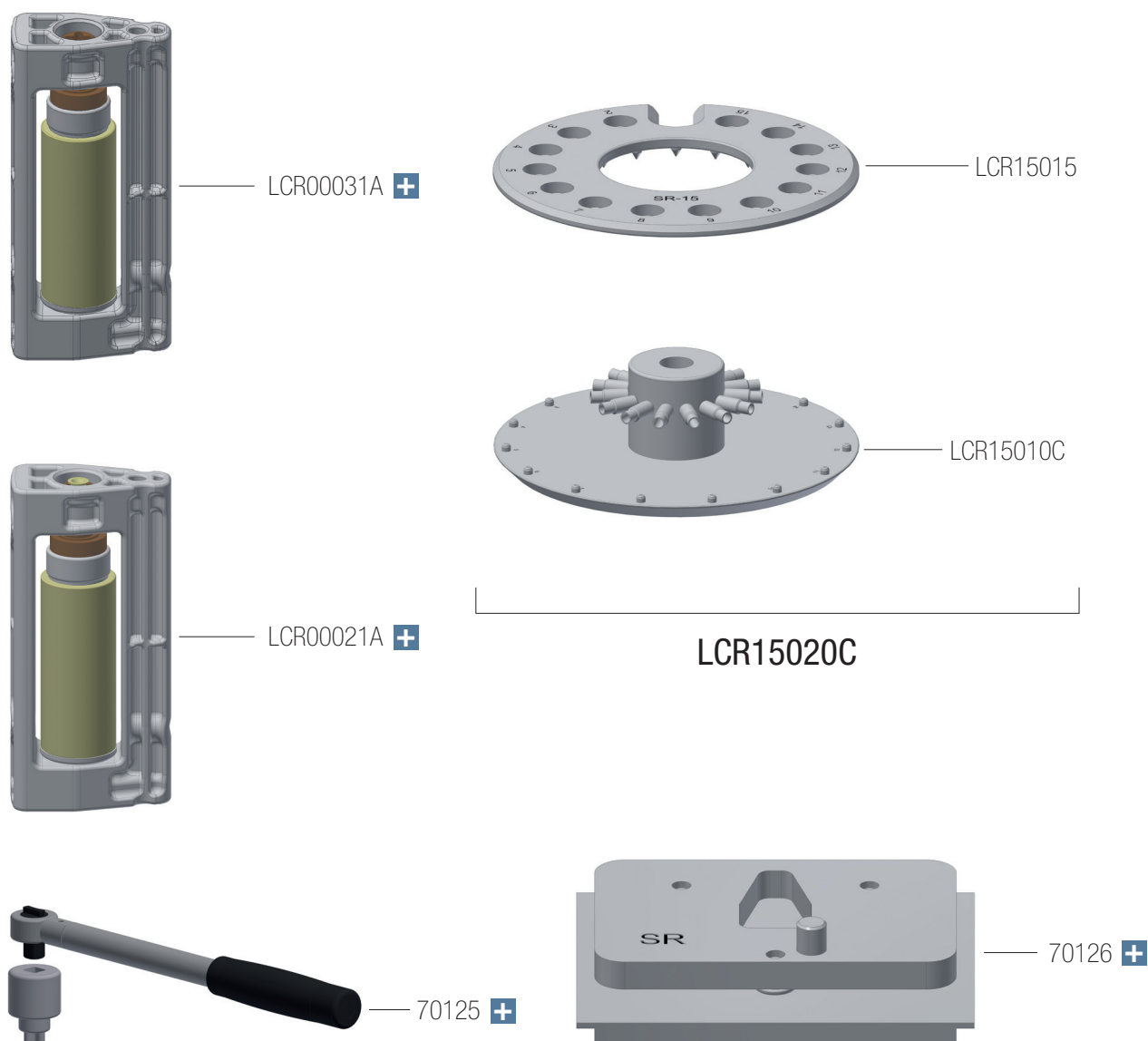
SK15-A 

P/N	Description
SK15-A 	Starter kit 15 segments high pressure rotor complete

 *Include subparts*

SK15-A

Starter kit 15 segments high pressure rotor complete

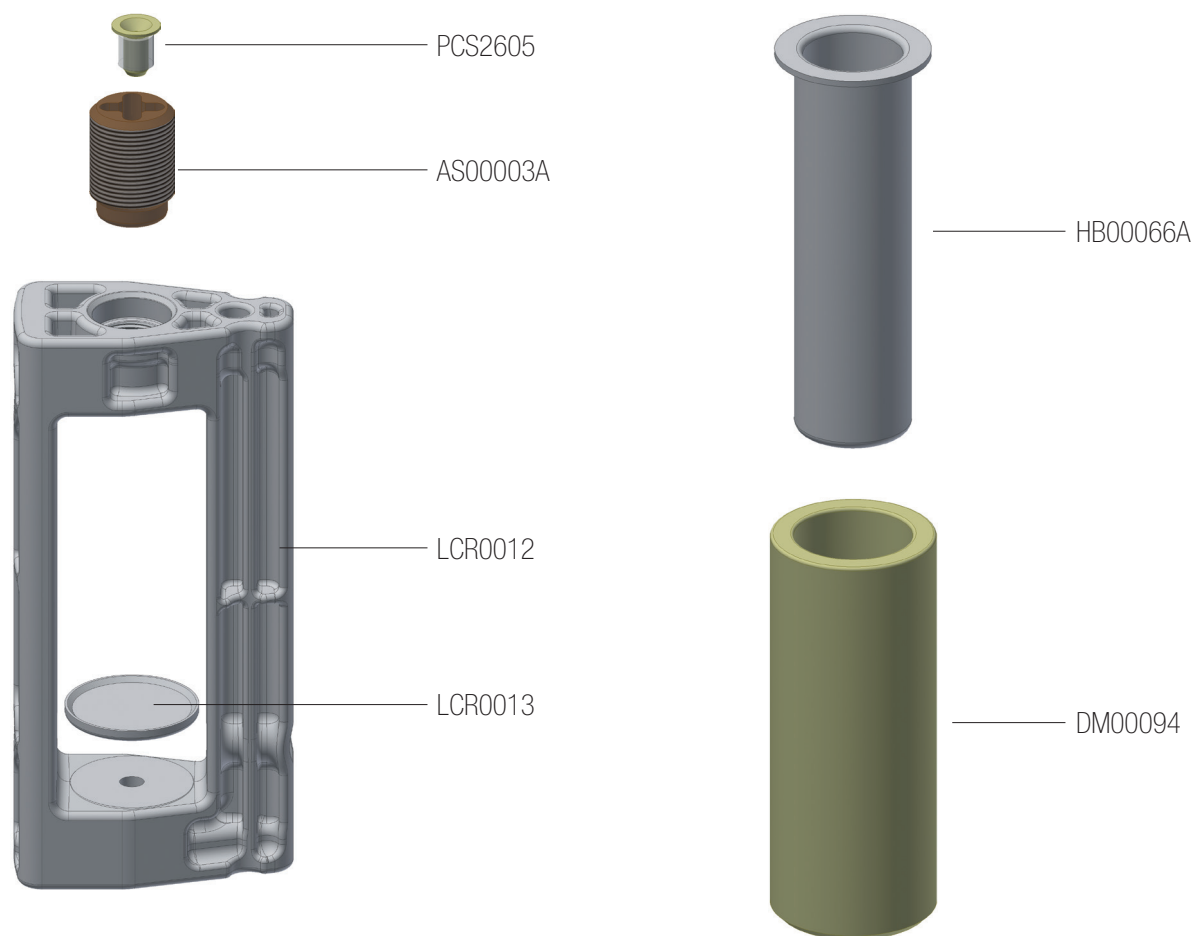


P/N	Description
LCR00021A +	ATC Reference Segment complete with ATC thermowell and installation tool
LCR00031A +	Standard segment complete
LCR15020C	Rotor body SK-15
LCR15015	SK-15 top plate
LCR15010C	SK-15 bottom plate
70125 +	Tension Wrench adjusted at 10 Nm, adapter included
70126 +	Workstation complete for SK-15

SK15-A

LCR00021A

ATC Reference Segment complete with ATC thermowell and installation tool

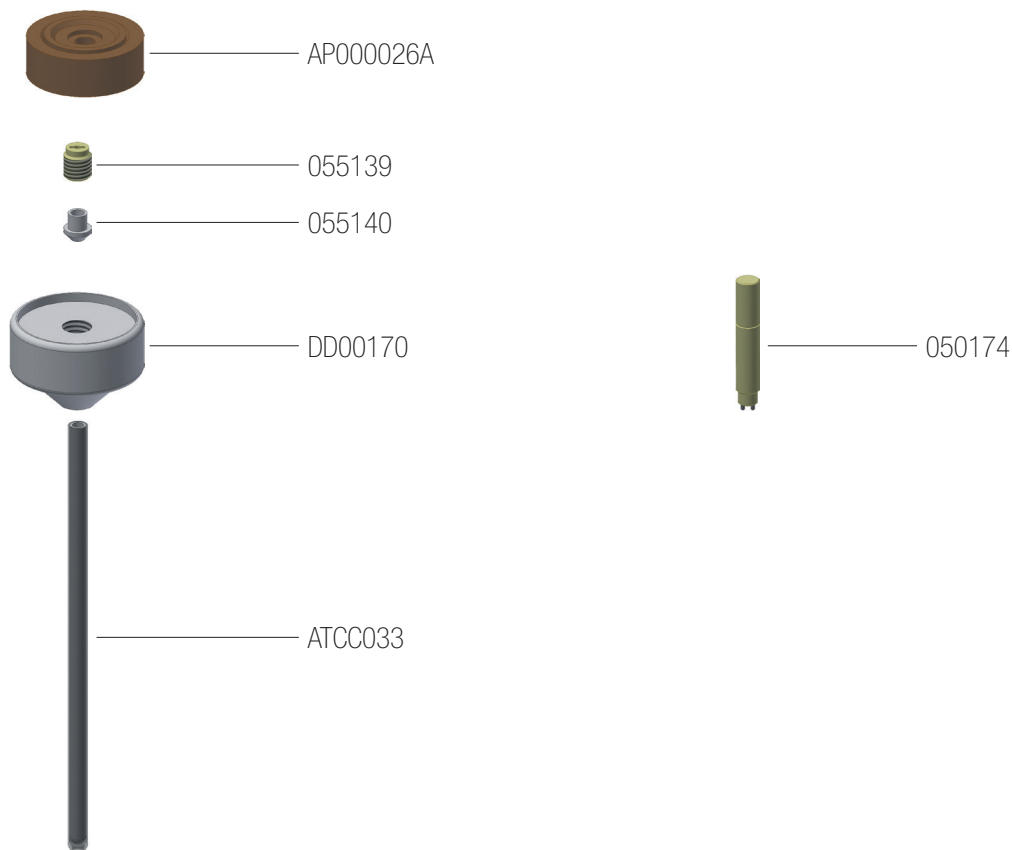


P/N	Description
PCS2605	Ring adapter
AS00003A	Pressure screw M26X37 for ATC
LCR0012	Segment SK-15
LCR0013	Centering plate PTFE 54/48x10 mm for P/N DM00094
HB00066A	High pressure vessel 100ml
DM00094	Safety shield for high pressure vessel

SK15-A

LCR00021A *(continued)*

ATC Reference Segment complete with ATC thermowell and installation tool

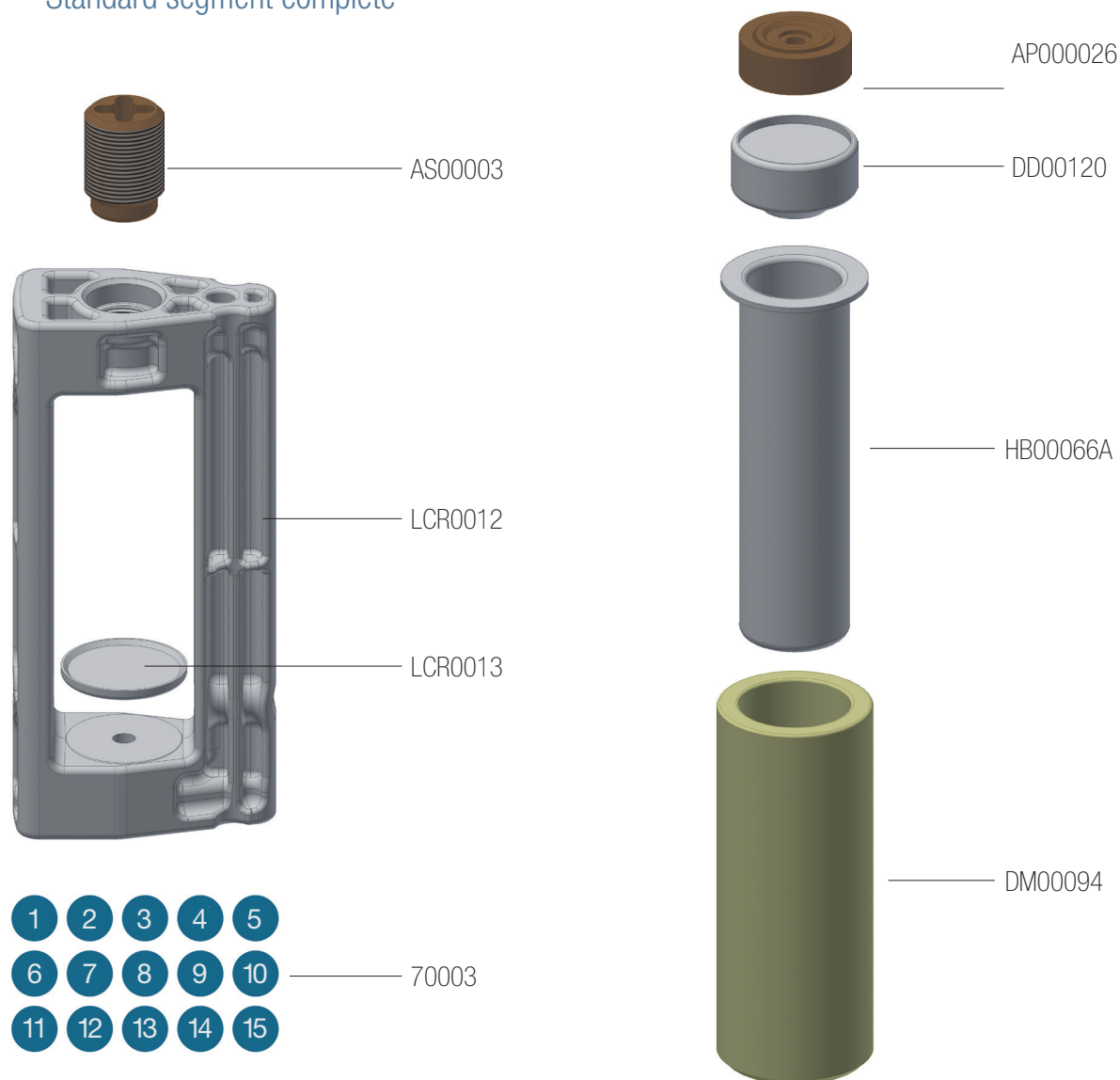


P/N	Description
AP000026A	Adapter plate for ATC with built-in safety releasing fluoropolymer spring
055139	ATC Sealing Screw
055140	ATC Sealing (included in P/N ATCC033)
DD00170	TFM Cover for ATC
ATCC033	Ceramic thermowell PTFE coated (Including P/N 055140)
050174	ATC Tool for spanning ceramic pipe sealing

SK15-A

LCR00031A

Standard segment complete

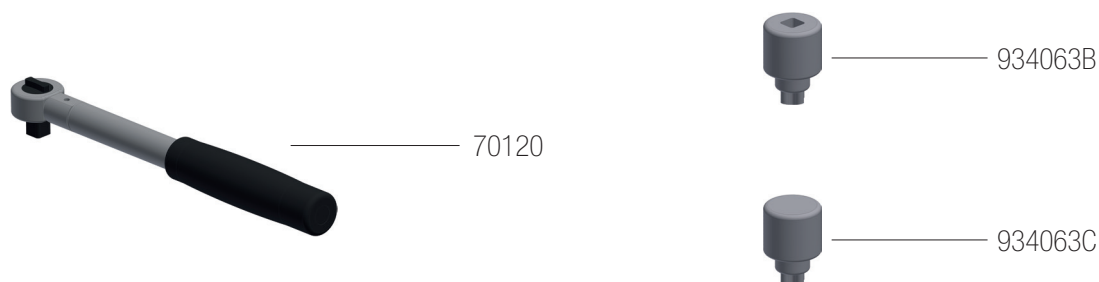


P/N	Description
AS00003	Pressure screw M26X37
LCR0012	Segment SK-15
LCR0013	Centering plate PTFE 54/48x10 mm for P/N DM00094
70003	Label SK15 vessels
AP000026	Adapter plate with built-in safety releasing fluoropolymer spring
DD00120	TFM Cover
HB00066A	High pressure vessel 100ml
DM00094	Safety shield for high pressure vessel

SK15-A

70125

Tension Wrench adjusted at 10 Nm, adapter included

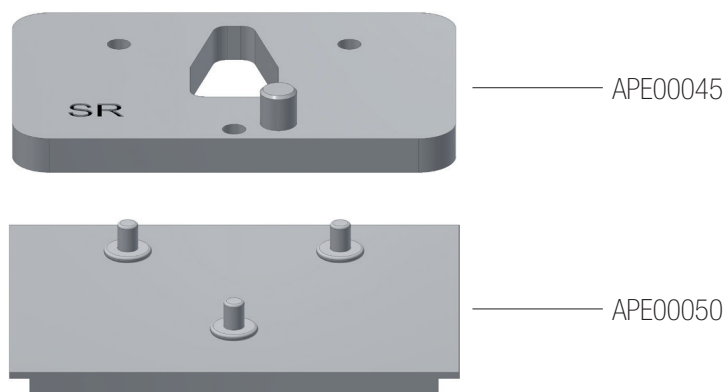


P/N	Description
70120	Torque wrench adjusted at 10 Nm
934063B	Adapter for torque wrench
934063C	Manual tool for vessel closing

SK15-A

70126

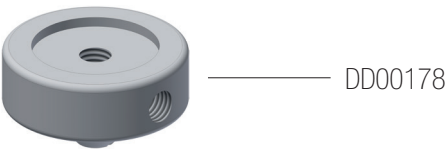
Workstation complete for SK-15



P/N	Description
APE00045	Workstation for SK-15 rotor, upper part
APE00050	Workstation for SK-15 rotor, bottom part

SK15-A

OPTIONS



P/N	Description
PR00001	Indicator ring for SK15ET vessel
DD00178	ATC cover complete with pressure port
PH00071	Sample rack 15 positions